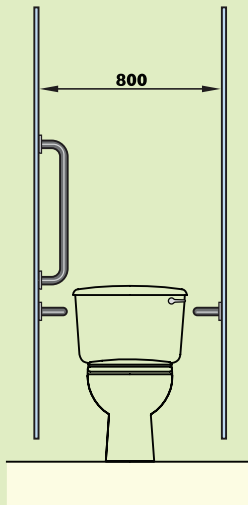
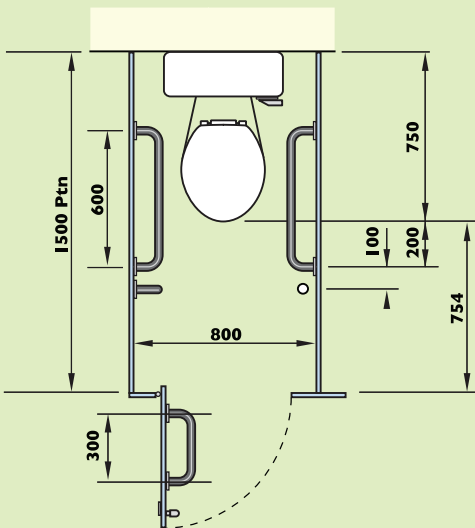


STANDARD AMBULANT DISABLED COMPARTMENT

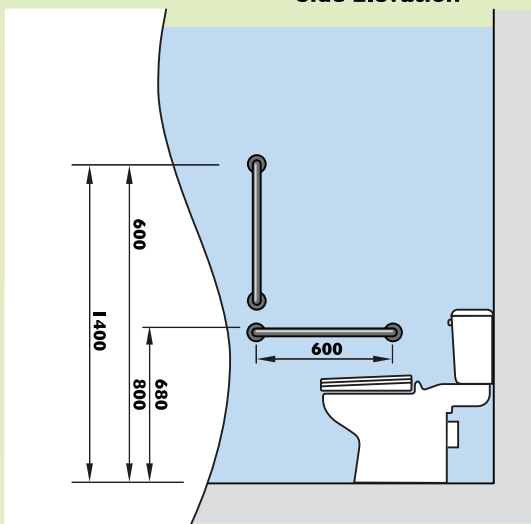
Front Elevation



Plan Elevation



Side Elevation



DDA REQUIREMENTS

Provision Considerations

The following is not exhaustive by any means. It is intended to provide some key pointers. **For full details refer to section 5.14 of Document 'M'.**

- ¥ Where there are 4 or more WC cubicles in separate-sex toilet accommodation one of these should be enlarged.
- ¥ At least one WC cubicle to be provided in separate-sex toilet accommodation for use by ambulant disabled people.
- ¥ Where there is space for only one toilet in a building, it is of a wheelchair-accessible unisex type and of a size to accommodate a standing height washbasin.
- ¥ The minimum dimensions of a standard compartment for ambulant disabled people, including the activity space, and the arrangements of grab bars and other fittings within the compartment comply with diagram 21 of the relating section in 5.14 of Document **M** **As shown.**
- ¥ Doors to compartments for ambulant disabled people are preferably outward opening and fitted with horizontal closing bar to the inside face.

Design Considerations

- ¥ Ambulant disabled people should have the opportunity to use a WC compartment within any separate-sex toilet washroom.
- ¥ Provision of an enlarged cubicle in a separate-sex toilet washroom can be of benefit to ambulant disabled people, as well as parents with children, and people who need enlarged space.
- ¥ Preferably, all doors to WC cubicles and wheelchair-accessible unisex toilets open out or, - if they open in, the door swing should not encroach into the wheelchair turning space or minimum activity space.

Visual Contrast

- ¥ Guidance is based on consideration of a forthcoming amendment to BS 8300:2001. Although this is geared to providing adequate visual differentiation for the visually impaired, how this is applied i.e. between walls and floors, doors and ceilings is less than clear.
- ¥ The definition of visual contrast in Approved Document **M** paragraph 0.29 refers to a difference in light reflectance values **LRV** of 30 points, where a perfect white registers 100 and a perfect black registers 0. e.g. Arctic LRV 0.85, Tropical 0.16 = LRV difference 69 points.
- ¥ Luminescence values are shown in our colour charts pages 62-64.

Sanitaryware Ratios

Ratios of **WCs**, urinals and wash hand basins will vary according to anticipated number of users and the type of building. Useful information on appropriate ratios can be found in BS6465 part-1.